

BRITAIN'S
MOST LUXURIOUS
TRAIN



NORTHERN BELLE
LUXURY TRAIN



WELCOME TO OUR WORLD

It is the warmth and dedication of the on board team that makes our journeys an extra special adventure.

Our plan is to 'wow' you with our superb offering. The opulent carriages, the delicious cuisine and the exciting destinations combine to create an adventure beyond compare. Add the friendly service of our dedicated team and you have memories to cherish forever.

We also have one or two special ingredients that will be added to the mix along the way, this is after all, a journey like no other.

Our housekeepers are polishing the silver, our chefs are putting the finishing touches to the menus, our engineers are completing their checks and our liveried stewards have the red carpets at the ready; all we are waiting for is you. One thing is for sure, you will join us as guests but leave as friends.

So please read on and let's get this adventure started.

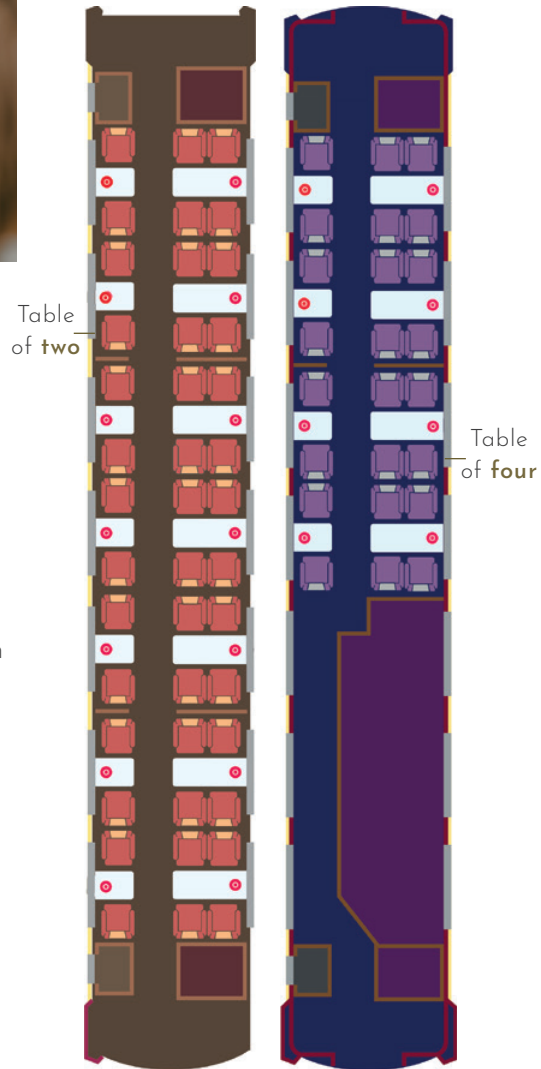


THE NORTHERN BELLE



Carriage Plan

42 seat carriage 24 seat carriage



Step aboard and you're immediately transported back to the glamorous 1930s, when beautifully appointed "Belle" trains - the inspiration behind the Northern Belle - traversed the country in comfort and style.

The carriages evoke the golden age of travel in all its glory - inside and out. From the hand-painted and sign written exterior to the luxuriously furnished interior, no detail has been overlooked. Walk through the train and you'll discover magnificent floor mosaics, gleaming brass ware and stylish ceiling murals. Most impressive, however, is the ornate veneered marquetry lining the walls, hand-crafted using methods that have scarcely changed for centuries.

Whether you're heading off to a famous castle, a vibrant city, a glamorous sporting event or trip into the country, gaze out of the window and you'll see the countryside - a magical backdrop to your journey.



WELCOME ON BOARD

With a heritage steeped in luxury, the Northern Belle recreates the elegance and comfort of the world's finest train travel. From sumptuous decor to gourmet dining and impeccable service.





THE YEAR FOR AN UNFORGETTABLE TRAVEL EXPERIENCE

In the Golden Age of travel the rich and famous would travel on beautifully appointed 'Belle' trains largely from London to the South Coast, perhaps to enjoy a day away from the hustle and bustle or maybe to board a cruise ship for an onward trans-Atlantic crossing.

But whatever the reason, they would travel in unrivalled comfort and style.

The experience that comes to life aboard the Northern Belle with its exquisitely decorated carriages, all named after a British castle or stately home, sumptuous cuisine and liveried stewards, each journey is as exciting as the destination.

As well as conjuring up the past, our exciting trips are a celebration of the present. The Northern Belle, built by the Orient Express in 2000, designed to offer the discerning traveller a taste of the Orient Express without leaving the country for a fabulous day away.

As you sit back in your armchair, prepare to glide through stunning scenery indulging in contemporary dishes and outstanding wines.

CONDÉ NAST TRAVELLER READERS' CHOICE AWARDS 2024

The Northern Belle has been voted one of "the best train trips in the world" by readers of the prestigious Condé Nast Traveller magazine for the third year in a row.

The magazine said: "It's all about the food – and the scenery. The meal services are exquisite, offering fine dining crafted mostly from UK suppliers so you can enjoy classic British fare as the heaths, meadows and dales roll on by."



CAVIAR, CHAMPAGNE AND MUCH MORE !!

Our latest programme is further enhanced with the inclusion of a Champagne reception, Caviar and Blinis, upgraded Sommelier wine selection matched perfectly for each course, Port with the cheese board, Fortnum & Mason tea and coffee, and memorable gift on departure. We've also brought back 'Champagne Afternoon Tea' which includes a bottle of Laurnet-Perrier champagne per couple.



THE ART & CRAFT OF TRAVEL

The country's top craftsmen worked on the design of Northern Belle and continue to be involved today, from muralists and mosaic artists to marquetry experts.



Since the trains launch in 2000, ten former railway carriages have been re-engineered and transformed at Crewe, in Cheshire, into sumptuous, period-style carriages. Each provides a unique on board environment that guarantees every comfort. Although traditional materials and detailing were employed, contemporary safety and engineering requirements were also incorporated into the designs.

Each carriage was stripped and rebuilt before hand-crafted interiors were added, such as luxuriously veneered panelling, the finest leather, deep-wool Axminster carpets, moquette upholstery and brass ware specially commissioned by British craftsmen. On the

exterior, the smart burgundy and cream livery was hand-painted before being meticulously sign written by hand, a rarity these days.

MASTERS OF MARQUETRY

One of the most outstanding features of the carriages is the exquisite marquetry panels lining the walls. The company that originally created and then restored the famed marquetry on the 'then' Orient Express, was commissioned to create inspiring designs featuring the splendid British castles and stately homes after which each carriage is named. Essex - based A Dunn & Son, now led by Cheryl Dunn, granddaughter of Albert, who founded his marquetry studio in 1895, still employs the traditional, intricate methods of the 1700s.



Their marquetry has been used in some of the world's most luxurious ocean liners, including the Titanic, the Lusitania, the Queen Mary and the Queen Elizabeth, while royal commissions have included the floors at Buckingham Palace and the perfectly proportioned Queen's Doll's House in Windsor Castle.



Duart, once part of the Royal train is the train's seventh carriage, which was added to the rake in 2011 and named after the eponymous Scottish castle. The ceiling showcases 23 intricate designs of plants and animals native to Scotland, such as the red deer stag and Scottish primrose, hand-painted in situ.

MAGNIFICENT MOSAICS

The floors of the rest rooms adjoining carriages Chatsworth, Harlech and Warwick are adorned with gorgeous mosaics designed by Brighton-based Mosaic Mad Romans. Owner, Aimee Harman, fell passionately in love with mosaics on a course in her mid-20s.

"The instructor left me alone with it and I instinctively knew what to do - I was drawn to the permanent and indestructible nature of mosaics", Aimee says.



GRAND DESIGNS

Discover the story of our carriages and the magnificent monuments that inspired them.

ALNWICK

Alnwick carriage features the marquetry motif of its namesake, lovingly inlaid with rich, elegant oak, boxwood, yew, sycamore, purple-heart and walnut wood. Currently owned by the Duke and Duchess of Northumberland, Alnwick is the second largest inhabited castle in England. Film fans may recognise its distinctive medieval outline from some well known films and series including Harry Potter, Elizabeth and Downton Abbey.

BELVOIR

The honeybees, flora and facade of striking Belvoir Castle adorn the carriage's marquetry, which is fashioned from Indian rosewood, anigre, oak, pomelle, sycamore, madrona burr and walnut. The castle is Norman in origin, although its current silhouette is modelled along Regency Gothic lines. Belvoir, the ancestral home of the Duke and Duchess of Rutland, is known for its priceless artworks and magical Italian-style terraced gardens.

CHATSWORTH

The magnificent yellow stone facade of this classical stately home in Derbyshire's lush Peak District is depicted in the marquetry of the Chatsworth carriage and in the adjoining rest room. Featuring yew tree burr, sycamore, walnut, maple and satinwood, the carriage is also dressed in sumptuous furnishings and fabrics suited to a grand country house.

GLAMIS

Crafted from sycamore, madrona burr, yew, peartree and boxwood, the "thrill" motif of Scottish art nouveau artist Charles Rennie Mackintosh, together with a depiction of Glamis Castle, offers a celebration of Scottish history and design in this carriage. Glamis Castle is also the historic seat of the Bowes-Lyon family - the most famous of whom, Elizabeth, became Queen Elizabeth the Queen.

HARLECH

Named after King Henry I's 13th-century stronghold, Harlech carriage features marquetry detailing the castle and daffodils, set in maple, boxwood, sycamore and European walnut. Now enjoying World Heritage status, the indomitable castle, perched on a 200-foot rock on the North Wales coast, was the inspiration for the famous song "Men of Harlech" following the Wars of the Roses.

DUART

In 2011, a seventh carriage was added to the train's fleet. It was named Duart as a thank you to Sir Lachlan Maclean and his team at Duart Castle, who have always extended a warm welcome to Northern Belle guests. The carriage was once part of the Royal Household train and features beautiful marquetry depicting wild flowers to symbolise the castle's spectacularly isolated position.

WARWICK

Inspired by the soaring towers of Warwick Castle the carriage includes 800-year-old oak panels inset with walnut, boxwood, anigre, satinwood and maple. The castle itself, sited high above a bend in the picturesque River Avon in Warwickshire, began life as a basic, motte-and-bailey stronghold built by William the Conqueror in 1068, but was developed over subsequent centuries by the Earls of Warwick into the magnificent edifice we see today.



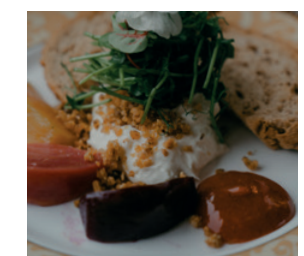
RESERVATIONS

To reserve your seats aboard The Northern Belle for any of our exciting 2025 journeys, please book online at [northernbelle.co.uk](https://www.northernbelle.co.uk)

If you have a smartphone, scan here



Alternatively, call our reservations team on **01270 907010** Monday to Friday 09:30 - 17:30





NORTHERN BELLE
LUXURY TRAIN



Northern Belle, 2 Chapel Court, Hospital Street, Nantwich. CW5 5RP.
Telephone: **01270 907010** Email: reservations@northernbelle.co.uk

northernbelle.co.uk